

Ideas in motion

CHIORINO[®]
1906

**Conveyor and process belts
for airports, materials handling
and post office automation**



Conveyor and process belts for airports, materials handling and post office automation

CHIORINO, a leading company in the materials handling and power transmission field produces a wide range of

- ▶ **Conveyor and process belts**
- ▶ **Flat power transmission belts**
- ▶ **Endless rubber belts**

The CHIORINO products are capable of satisfying the increasing demands of reliability and higher sorting speeds in AIRPORTS, WAREHOUSES, DISTRIBUTION and POST OFFICE CENTRES, ensuring quality and high levels of performance.

Through close cooperation with the most important OEM's in the world, the CHIORINO R&D laboratories have developed innovative and customized solutions to meet customer demands.

CHIORINO operates throughout the world with 15 Associated Companies and more than 60 partners, if one includes exclusive distributors, and highly qualified assistance centres capable of guaranteeing a speedy assistance and installation service, 24 hours a day. For more information on the Distribution Network see www.chiorino.com.

Quality and environment certified

EMAS - UNI EN ISO 9001:2004 - UNI EN ISO 14001:2008

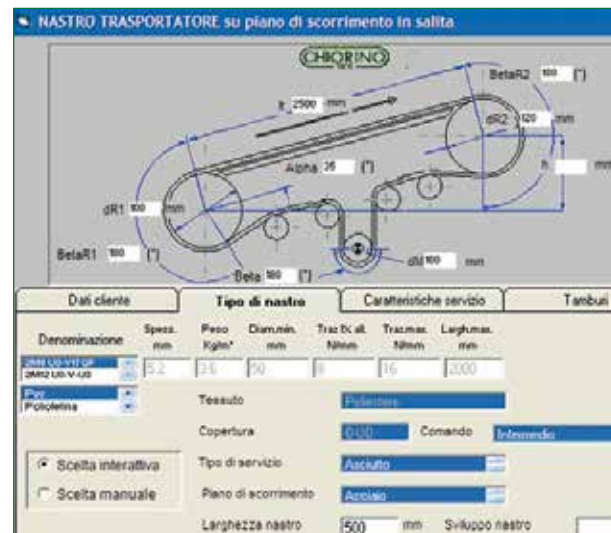


Safety, efficiency and reliability in handling

CHIORINO offers full technical assistance and service to its customers, from the project design to the fitting stage. Sophisticated calculation programs developed by CHIORINO allow correct belt type selection and give the correct technical design data for any conveyor or transmission belt allowing CHIORINO to work in full technical partnership with its customers.

Features and benefits

- ▶ Low energy absorption
- ▶ Flame retardant according to EN20340-ISO 340
- ▶ Quiet running
- ▶ Absolute working safety
- ▶ Long life
- ▶ Very high resistance to abrasion and impacts
- ▶ Wide range of surface patterns to satisfy any conveying requirement
- ▶ Technical assistance from the project design
- ▶ Worldwide 24-hours prompt response for installations



Airports baggage handling

- ▶ **Check-in**
- ▶ **X-ray baggage control systems**
- ▶ **Explosives detectors**
- ▶ **Diverters Flipper and Pusher**
- ▶ **Aircraft loading and unloading**

CHIORINO supplies to the most important international airports conveyor and process belts able to satisfy the growing demand for reliability and sorting speed for the handling of all types of baggage, from check-in through to loading into the luggage hold.

The wide range of CHIORINO belts, developed together with the leading airport handling system manufacturers, is able to satisfy any need, ensuring quality and high performance levels whilst at the same time fully complying with international safety standards.

Thanks to its distribution network CHIORINO is able to give an efficient rapid response service 24 hours a day in the airports throughout the world.

INTERNATIONAL AIRPORTS EQUIPPED WITH CHIORINO CONVEYOR BELTS

Europe

*Amsterdam, Netherlands
Athens, Greece
Barcelona, Spain
Bergamo, Italy
Birmingham, U.K.
Bologna, Italy
Bruxelles, Belgium
Dresda, Germany
Düsseldorf, Germany
Frankfurt, Germany
Geneva, Switzerland*

*Glasgow, Scotland
Leeds Bradford, U.K.
Lyon, France
London Gatwick, U.K.
London Heathrow, U.K.
London Stanstead, U.K.
Lugano, Switzerland
Luxembourg
Madrid, Spain
Manchester, U.K.
Marseilles, France*

*Milan Linate, Italy
Milan Malpensa, Italy
Nice, France
Oporto, Portugal
Palm of Majorca, Spain
Paris, France
Rome Ciampino, Italy
Rome Fiumicino, Italy
Stockholm, Sweden
Tampere, Finland
Turin Caselle, Italy*



Features and benefits

▶ Flame retardant according to EN20340-ISO 340

▶ Suitable for X-ray control systems

▶ Suitable for explosives detectors

▶ Low energy absorption

▶ Quiet running

▶ Antistatic

▶ Wide range of surface patterns to satisfy any conveying requirement

▶ Very high resistance to abrasion and impacts

▶ Long life

▶ Worldwide 24-hours prompt response for installations



America
Dallas Texas, U.S.A.
Fargo North Dakota, U.S.A.
Gaia, Barbados
Idaho Boise, U.S.A.
Lima, Peru
Los Angeles California, U.S.A.
Nassau, Bahamas
New York, U.S.A.
Portland Oregon, U.S.A.
San Francisco California, U.S.A.
Toronto, Canada

Tucson Arizona, U.S.A.
Vancouver, Canada
Richmond Virginia, U.S.A.

Asia / Africa / Australia
Adelaide, Australia
Ashgabat, Turkmenistan
Brisbane, Australia
Cairns, Australia
Canberra, Australia
CapeTown, South Africa

Darwin, Australia
Dubai, United Arab Emirates
Durban, South Africa
Johannesburg, South Africa
Marowa Salak, Camerun
Melbourne, Australia
Newcastle, Australia
Perth, Australia
Shenzhen, China
Singapore Changi
Sydney, Australia

Materials handling

- ▶ **Horizontal and inclined conveying**
- ▶ **Cross belt sorters**
- ▶ **30-45° Mergers**
- ▶ **Telescopic belts**
- ▶ **Separators**

Together with the leading manufacturers of warehouse handling installations, CHIORINO has developed a range of conveyor and transmission belts, which are able to satisfy the growing demand for reliability of high speed sorting in warehouse and distribution centres.

The wide range of CHIORINO conveyor belt coatings (polyurethane, PVC, elastomer etc.) allows to select the best belt suitable for specific handling requirements.

CHIORINO offers to the OEM full technical assistance from the project design.

The CHIORINO R&D Laboratories develop innovative solutions to satisfy the higher market demands concerning reliability, quiet running and energy saving of the conveyor and process belts.

Thanks to its distribution network CHIORINO is able to give an efficient rapid response service 24 hours a day throughout the world.



©Dematic Italia



Features and benefits

- ▶ Low energy absorption
- ▶ High capacity of conveying
- ▶ Very high resistance to abrasion and impacts
- ▶ Wide range of surface patterns
- ▶ Safety and reliability
- ▶ Quiet running
- ▶ Long life



▶ Live roller drives

Fast Joint

CHIORINO manufacture a complete range of products in thermoplastic materials suitable for live roller drives. CHIORINO thermoplastic belts can be fitted on site using the FAST JOINT system and equipment, which require only few minutes and no adhesives.

Elastic EL belts

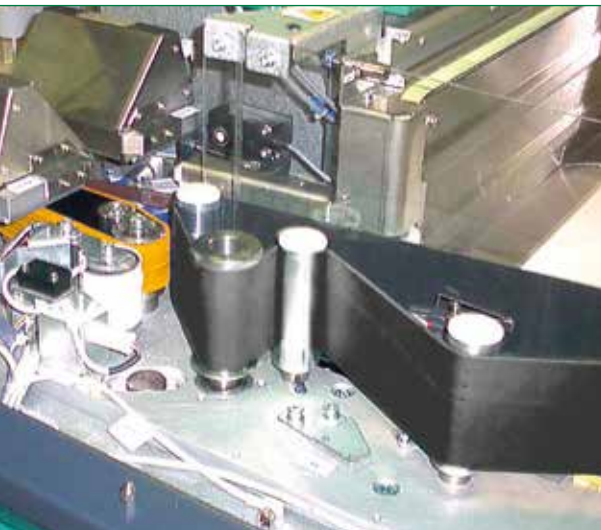
Thermoplastic power transmission belts in polyester
Polyurethane round and V-belts (see general catalogue)



Post Office Automation

- ▶ **OCR (optical code reader)**
- ▶ **VCR (video code reader)**
- ▶ **CFC (culler facer canceller)**

CHIORINO offers the complete range of conveyor, transmission and mandrel made belts used in the mail sorting process machines adopting optical reading technology.



Features and benefits

- ▶ **High capacity of conveying and constant coefficient of friction**
- ▶ **Anti-glazing**
- ▶ **Excellent resistance to abrasion and wearing**
- ▶ **Long life**
- ▶ **Dimensional stability**
- ▶ **Perforated belts can be supplied to Customer design**

CHIORINO manufactures curve belts suitable for installation on any type of powered curve conveyor existing in the market. Through a sophisticated totally computer-based (CAD controlled) cutting table, CHIORINO belts can be manufactured without any limitation in the external radius and angle, from a few degrees up to a complete circle (360°). Thanks to this innovative cutting system, CHIORINO curve belts can be supplied on demand for any dimensional requirement and in accordance with customized drawings, ensuring absolute precision and correct working on the conveyor. The wide range of CHIORINO belts suitable for powered curve conveyors (see column 10 page 11) satisfies any application request in airport handling and sorting systems.

On request the curve belts can be fabricated with special finishing such as:

- perforations
- application of buttons
- application of eyelets.

Features and benefits

▶ **Absolute precision**

▶ **Excellent flatness and superb flexibility**

▶ **Suitable for small pulley diameters**

▶ **Wide range of surface patterns**

▶ **Flame retardant version also available, according to EN20340-ISO 340**

▶ **Long life**

Curve belts



		Type	Traction core		Top cover	Bottom cover	Low noise fabric on driving surface (LdB) (1)	Permanent antistatic	Total thickness	Weight	Minimum diameter (2)		Pull for 1% elongation	Max. admissible pull / Tensile strength (3)	Min. temperature resistance	Max. temperature resistance	Comparative coefficient of friction (4)
			mm	kg/m ²							mm	N/mm					
CONVEYOR AND PROCESS BELTS	POLYURETHANE	2M5 U0-U2 A	PET	TPU ●	TPU ●	✓	✓	1,2	1,4	↗	6	12	-20	+100	LF		
		2M8 U0-U2 SP	PET	TPU ●	TPU ●	✓	✓	1,5	1,6	↗	8	16	-20	+100	LF		
		2M8 U0-U2 N SP	PET	TPU ●	TPU ●	✓	✓	1,4	1,4	↗	8	16	-20	+100	LF		
		2T12 U0-U2 VL N A	PET	TPU ●	TPU ○	✓	✓	1,6	1,7	14	12	24	-20	+100	MF		
		2T12 U0-U2 PN N A	PET	TPU ●	TPU ○	✓	✓	1,7	1,7	14	12	24	-20	+100	MF		
		2M12 U0-U3 R A	PET	TPU ●	TPU ○	✓	✓	1,7	1,8	40	12	24	-20	+100	LF		
		2M12 U0-U3 R N A	PET	TPU ●	TPU ○	✓	✓	1,7	1,8	40	12	24	-20	+100	LF		
		2M12 U0-V-U5 SP	PET	TPU ●	TPU ●	✓	✓	2,1	2,5	60	12	24	-10	+60	LF		
		3M18 U0-V-U10 SP	PET	TPU ●	TPU ●	✓	✓	3,7	4,4	100	18	36	-10	+60	LF		
	PVC	1M6 U0-V5 N	PET	PVC ●	TPU ●	✓	✓	1,0	1,1	20	6	6	-10	+60	LF		
		2M8 U0-V5 A	PET	PVC ●	TPU ●	✓	✓	2,0	2,3	30	8	16	-10	+60	MF		
		2M8 U0-V17 GP	PET	PVC ●	TPU ●	✓	✓	5,2	3,7	50	8	16	-10	+60	HF		
		2M10 U0-V10	PET	PVC ●	TPU ●	✓	✓	2,8	3,3	50	10	20	-10	+60	MF		
		2M12 U0-V-U0 GR	PET	TPU ●	TPU ●	✓	✓	1,7	1,6	40	12	24	-10	+60	LF		
		2T12 U0-V0	PET	PVC ●	TPU ●	✓	✓	2,5	2,6	80	12	24	-10	+60	LF		
		2M12 U0-V3	PET	PVC ●	TPU ●	✓	✓	1,9	2,1	40	12	24	-10	+60	LF		
		2M12 U0-V3 N	PET	PVC ●	TPU ●	✓	✓	1,9	2,1	40	12	24	-10	+60	LF		
		2M12 U0-V7 LG	PET	PVC ●	TPU ●	✓	✓	2,4	2,4	40	12	24	-10	+60	HF		
		2M12 U0-V8 RT	PET	PVC ●	TPU ●	✓	✓	2,3	2,4	40	12	24	-10	+60	HF		
		2M12 U0-V10 A	PET	PVC ●	TPU ●	✓	✓	2,5	2,9	50	12	24	-10	+60	MF		
		2M12 U0-V10 N	PET	PVC ●	TPU ●	✓	✓	2,9	3,5	60	12	24	-10	+60	LF		
		2M12 U0-V10 RT	PET	PVC ●	TPU ●	✓	✓	2,6	2,6	50	12	24	-10	+60	HF		
		2T12 U0-V10	PET	PVC ●	TPU ●	✓	✓	2,5	2,9	50	12	24	-10	+60	MF		
		2M12 U0-V15 GPL N	PET	PVC ●	TPU ●	✓	✓	3,8	3,5	60	12	24	-10	+60	HF		
	2M12 U0-V20 GP	PET	PVC ●	TPU ●	✓	✓	5,5	3,9	50	12	24	-10	+60	HF			
	3T18 U0-V0	PET-cotton	PVC ●	TPU ●	✓	✓	3,7	3,9	120	18	36	-10	+60	LF			
	3M18 U0-V15 A	PET	PVC ●	TPU ●	✓	✓	4,2	4,9	100	18	36	-10	+60	MF			
	3T18 U0-V15	PET	PVC ●	TPU ●	✓	✓	4,2	4,9	100	18	36	-10	+60	MF			
	FLAME RETARDANT	2T12 U0-U2 FM FR	PET	TPU ●	TPU ○	✓	✓	1,8	1,8	30	12	24	-20	+100	MF		
		2M12 U0-U3 R A FR	PET	TPU ●	TPU ●	✓	✓	1,7	2,0	40	12	24	-20	+100	LF		
		1M12 U0-V5 PN FR	PET	PVC ●	TPU ●	✓	✓	1,8	1,9	40	8	12	-10	+60	HF		
		2M5 U0-V5 PN FR	PET	PVC ●	TPU ●	✓	✓	1,9	2,1	40	6	12	-10	+60	HF		
		2M12 U0-V-U0 FR	PET	TPU ●	TPU ●	✓	✓	2,5	2,5	40	12	24	-10	+60	LF		
		2M12 U0-V7 LG FR	PET	PVC ●	TPU ●	✓	✓	2,7	2,4	40	12	24	-10	+60	HF		
		2M12 U0-V10 FR	PET	PVC ●	TPU ●	✓	✓	2,5	2,9	50	12	24	-10	+60	MF		
		2T12 U0-V10 FM FR	PET	PVC ●	TPU ●	✓	✓	2,6	2,9	50	12	24	-10	+60	MF		
		2M12 U0-V10 RT FR	PET	PVC ●	TPU ●	✓	✓	2,7	2,9	60	12	24	-10	+60	HF		
		2M12 U0-V20 FB FR	PET	PVC ●	TPU ●	✓	✓	4,6	3,9	50	12	24	-10	+60	HF		
		2M12 U0-V20 GP FR	PET	PVC ●	TPU ●	✓	✓	5,5	3,9	50	12	24	-10	+60	HF		
		2M12 U0-V30 RL FR	PET	PVC ●	TPU ●	✓	✓	8,5	5,8	60	12	24	-25	+70	HF		
	ELASTOMER	2M8 U0-U-G10TP LG	PET	TPG ●	TPU ●	✓	✓	2,8	2,7	30	8	16	-20	+100	HF		
		2M8 U0-U-G15 FL	PET	NBR ●	TPU ●	✓	✓	3,0	3,4	50	8	16	-20	+100	MF		
		2T12 U0-U-G10 FH	PET	NBR ●	TPU ●	✓	✓	2,2	2,2	50	12	24	-20	+100	HF		
		2T12 U0-G25 GP	PET	XNBR ●	TPU ●	✓	✓	5,5	4,5	80	12	24	-40	+100	HF		
	SILON	SILON 40 HC	PET	PET ●	PET ●	✓	✓	4,0	2,4	60	10	10	-20	+120	LF		
SILON 60 HC		PET	PET ●	PET ●	✓	✓	5,5	3,4	100	10	10	-20	+120	LF			
SILON 60 NA		PET	PET ●	PET ●	✓	✓	5,5	3,4	100	10	10	-20	+120	LF			
Fast-Joint	EL2-U10 FL	---	PUR ●	PUR ●	✓	✓	1,0	1,2	10	2 ⁽⁵⁾	2	-20	+60	MF			
	EL3-U15 FL	---	PUR ●	PUR ●	✓	✓	1,5	1,6	10	3 ⁽⁵⁾	3	-20	+60	MF			
	EL3-U17 HP N	---	PUR ●	PUR ●	✓	✓	1,7	1,8	10	3 ⁽⁵⁾	3	-30	+60	MF			
	1M6 U0-U5 FL	PET	PUR ●	PUR ●	✓	✓	1,0	1,0	10	6	6	-20	+100	MF			
	1M6 U3-U3 FL	PET	PUR ●	PUR ●	✓	✓	1,2	1,3	10	6	6	-20	+100	MF			
	1M6 U5-U5 FL	PET	PUR ●	PUR ●	✓	✓	1,6	1,9	20	6	6	-20	+100	MF			
	DG-E 10/30	PET	NBR ●	NBR ●	✓	✓	3,0	3,5	30	10	90	-20	+70	MF			
DG-E 10/40	PET	NBR ●	NBR ●	✓	✓	4,0	5,0	40	10	90	-20	+70	MF				
TRANSMISSION BELTS	T0	PA	NBR ●	NBR ●	✓	✓	1,4	1,5	20	2	80	0	+100	MF			
	T1 ⁽⁶⁾	PA	NBR ●	NBR ●	✓	✓	1,7	1,8	25	5	200	0	+100	MF			
	T2 ⁽⁶⁾	PA	NBR ●	NBR ●	✓	✓	2,3	2,6	60	7,5	300	0	+100	MF			
	T3 ⁽⁶⁾	PA	NBR ●	NBR ●	✓	✓	2,6	2,8	100	10	400	0	+100	MF			
	DG1/30 HS	PA	NBR ●	NBR ●	✓	✓	3,0	3,4	30	5	200	0	+100	MF			
	DG2/40 HS	PA	NBR ●	NBR ●	✓	✓	4,0	4,8	50	7,5	300	0	+100	MF			
	MF-L200	PET	NR ●	---	✓	✓	5÷8	---	⁽⁷⁾	8	---	-20	+70	HF			
MF-R200	PET	NR ●	---	✓	✓	5÷8	---	⁽⁷⁾	8	---	-20	+100	HF				
MF-HS 200G	PET	NR ●	NBR ●	✓	✓	4÷6	---	⁽⁷⁾	10	---	-30	+80	HF				

(1) Quiet running: the belts having a LdB bottom fabric give quiet running properties.

(2) Minimum roller diameter is dependent on the joint recommended by CHIORINO.

(3) For TRANSMISSION BELTS, the value indicates the tensile strength.

(4) Top cover coefficient of friction: low LF, medium MF, high HF.

(5) Elastic belts "EL": pull for 8% elongation.

(6) R execution (higher thickness) available.

(7) Minimum diameter for MF belts is according to total thickness.

↗: knife edge

Drawing no.		Check-in	Baggage control	Explosives detectors	Horizontal take-away	Inclined take-away	Separators	Cross belt sorter	Diverters	Diverters - Flipper	30/45° mergers	Accumulator conveyor belts	Telescopic conveyor belts	Curve belts	Live roller belt drives	POSTAL AUTOMATION	Type
1-2	1	1	1	2	3	4	5	6	7	8	9	10	11				
																	✓ 2M5 U0-U2 A
																	✓ 2M8 U0-U2 SP
																	2M8 U0-U2 N SP
																	2T12 U0-U2 VL N A
																	2T12 U0-U2 PN N
		✓	✓														2M12 U0-U3 R A
				✓													2M12 U0-U3 R N A
				✓													2M12 U0-V-U5 SP
				✓				✓									3M18 U0-V-U10 SP
																	1M6 U0-V5 N
				✓													2M8 U0-V5 A
				✓	✓												2M8 U0-V17 GP
				✓													2M10 U0-V10
																	2M12 U0-V-U0 GR
				✓													2T12 U0-V0
				✓													2M12 U0-V3
				✓													2M12 U0-V3 N
				✓	✓												2M12 U0-V7 LG
				✓													2M12 U0-V8 RT
																	2M12 U0-V10 A
				✓													2M12 U0-V10 N
																	2M12 U0-V10 RT
				✓													2T12 U0-V10
				✓													2M12 U0-V15 GPL N
				✓	✓												2M12 U0-V20 GP
				✓													3T18 U0-V0
																	3M18 U0-V15 A
																	3T18 U0-V15
		✓	✓														✓ 2T12 U0-U2 FM FR
		✓	✓														2M12 U0-U3 R A FR
				✓	✓		✓										✓ 1M12 U0-V5 PN FR
				✓	✓		✓										✓ 2M5 U0-V5 PN FR
				✓													2M12 U0-V-U0 FR
				✓	✓			✓									2M12 U0-V7 LG FR
	✓	✓		✓													2M12 U0-V10 FR
																	2T12 U0-V10 FM FR
				✓													2M12 U0-V10 RT FR
	✓			✓													2M12 U0-V20 FB FR
	✓			✓													2M12 U0-V20 GP FR
	✓			✓	✓												2M12 U0-V30 RL FR
				✓													2M8 U0-U-G10TP LG
				✓													2M8 U0-U-G15 FL
				✓				✓									2T12 U0-U-G10 FH
				✓													2T12 U0-G25 GP
																	✓ SILON 40 HC
																	✓ SILON 60 HC
																	✓ SILON 60 NA
																	✓ EL2-U10 FL
																	✓ EL3-U15 FL
																	✓ EL3-U17 HP N
																	✓ 1M6 U0-U5 FL
																	✓ 1M6 U3-U3 FL
																	✓ 1M6 U5-U5 FL
																	✓ DG-E 10/30
																	✓ DG-E 10/40
																	✓ T0
																	✓ T1 ⁽⁶⁾
																	✓ T2 ⁽⁶⁾
																	✓ T3 ⁽⁶⁾
																	✓ DG1/30 HS
																	✓ DG2/40 HS
																	✓ MF-L200
																	✓ MF-R200
																	✓ MF-HS 200G

CONVEYOR AND PROCESS BELTS EXPLANATION OF TYPE DESIGNATION

- 2** Number of plies
- M** Textile carcass
- 8** Pull for 1% elongation [N/mm]
- U** Bottom cover
- 0** Thickness (mm/10)
- U** Possible interply
- G** Top cover
- 15** Thickness (mm/10)
- FL** Surface pattern / Other characteristics
- EL** Elastic belt without textile carcass
- 2** Pull for 8% elongation [N/mm]
- U** Material
- 10** Thickness (mm/10)
- FL** Surface pattern / Other characteristics
- SILON** Non woven
- 40** Thickness (mm/10)
- HC** Other characteristics

TEXTILE CARCASS

- M** Rigid polyester
- MT** Combined polyester
- T** Flexible polyester
- EL** Belt without textile carcass

COATING AND INTERPLY MATERIALS

- G** Elastomer
 - TPG thermoplastic elastomer
 - NBR synthetic rubber
 - NR natural rubber
- U** Polyurethane
- V** Polyvinyl chloride (PVC)

OTHER CHARACTERISTICS

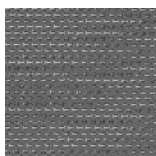
- FR** Flame retardant (EN20340 - ISO340)
- GR** Grey colour top cover
- HC** Static conductivity (ISO 284)
- HP** High performance
- HS** High performance elastomer
- N** Black colour top cover
- R** High transversal stability
- VL** Velvet finish

The technical data of this table has been formulated under normal environment conditions. They are subject to alteration without notice.

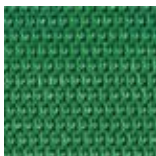
SURFACE PATTERNS



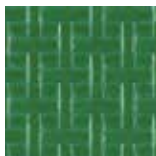
FL



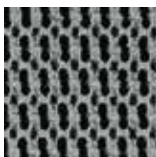
FM



FH



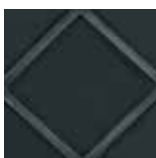
RT



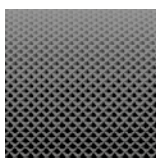
GP



GPL



RL



PN



LG



FB

Transmission belts Explanation of type designation

TRACTION CORE

DG-E Polyester fabric

T - DG Mono ply polyamide

SURFACE MATERIALS

DG-E NBR synthetic rubber

T - DG

OTHER CHARACTERISTICS

HS Very high resistance to abrasion

Endless belts Explanation of type designation

MF Endless belt (mandrel made)

L Outer cover

L raspberry (35 Sh.A)

R purple red (45 Sh.A)

HS ochre (40 Sh.A)

200 2 ply polyester fabrics

G Synthetic rubber, green colour
65 Sh.A inner cover

Drawing No.



1



2



3



4



5



6



7



8



9



10



11

CHIORINO AFFILIATED COMPANIES

America

CHIORINO AMERICA
Newark, DE
Tel. +1-302-292-1906
info@chiorino.us
www.chiorino.us

Australia

CHIORINO AUSTRALIA - Brisbane
Tel. +61-7-3274 1900
sales@chiorino.com.au
www.chiorino.com.au

Benelux

CHIORINO BENELUX B.V. - Utrecht,
The Netherlands
Tel. +31-30-2413060
chiorino@chiorino.nl
www.chiorino.nl

Byelorussia

CHIORINO-K - Minsk
Tel. +375-17-2804578
general@chiorino.ru
www.chiorino.ru

China

CHIORINO ASIA Ltd.
Hong Kong
Tel. +852-397-10818
info@chiorino.asia
www.chiorino.asia

CHIORINO LIAISON OFFICE, Shanghai
Tel. +86-21-37831019
info@chiorino.cn
www.chiorino.cn

France

CHIORINO SAS - Lagny, Paris
Tel. +33-1-64304075
chiorino.paris@chiorino.fr
www.chiorino.fr

Germany

CHIORINO GmbH - Mainz
Tel. +49-(0)6131-55449-0
info@chiorino.de
www.chiorino.de

Hungary

CHIORINO Kft. - Szigetszentmiklós,
Budapest
Tel. +36-24-525930
mail@chiorino.hu
www.chiorino.hu

India

CHIORINO INDIA - Salcete Goa
Tel. +918-322-782454
info@chiorino.in
www.chiorino.in

Italy

CHIORINO PARMA s.r.l. - Parma
Tel. +39-0521-292236
chiorinoparma@chiorino.com
CHIORINO VENETO s.r.l. - Colle Umberto
Tel. +39-0438-430460
chiorinoveneto@chiorino.com

Poland

CHIORINO Sp. z o.o. - Bydgoszcz
Tel. +48-(0)52-3487708
chiorino@chiorino.com.pl
www.chiorino.com.pl

Portugal

CHIORINO PORTUGAL, LDA
Alfena Valongo, Porto
Tel. +35-122-9684442
geral@chiorino.pt
www.chiorino.pt

Romania

CHIORINO srl - Cluj Napoca
Tel. +40-264-432977
chiorino@chiorino.ro
www.chiorino.ro

South Africa

CHIORINO SOUTH AFRICA (PTY) LTD.
Johannesburg
Tel. +27-11-3971268
sales@chiorino.co.za
www.chiorino.com

Spain

CHIORINO IBERICA S.A. - Rubí, Barcelona
Tel. +34-93-5860480
chiorino@chiorino.es
www.chiorino.es

Switzerland

CHIORINO SCHWEIZ GmbH - Wetzikon
Tel. +41-(0)43-3116001
info@chiorino.ch
www.chiorino.ch

United Kingdom

CHIORINO U.K. Ltd. - Featherstone
Tel. +44-1977-691880
sales@chiorino.co.uk
www.chiorino.co.uk

CHIORINO DISTRIBUTORS

Albania
Argentina
Armenia
Austria
Azerbaijan
Bangladesh
Belgium
Bolivia
Bosnia-Herzegovina
Botswana
Brazil
Bulgaria
Cambodia
Canada
Chile
Colombia
Costa Rica
Croatia
Cyprus
Czech Republic
Denmark
Egypt
Estonia
Fiji
Finland
Georgia
Greece
Guatemala
Honduras
Iceland
Indonesia
Iran
Ireland
Israel
Ivory Coast
Jordan
Kazakhstan
Kenya
Kirgystan
Laos
Latvia
Lebanon
Lithuania
Macedonia
Malawi
Malaysia
Mexico
Moldova
Morocco
Myanmar
New Caledonia
New Zealand
Nicaragua
Pakistan
Panama
Papua New Guinea
Paraguay
Peru
Russia
Saudi Arabia
Serbia
Slovak Republic
Slovenia
South Korea
Sri Lanka
Sweden
Tadjikistan
Thailand
Turkey
Turkmenistan
Ukraine
United Arab Emirates
Uzbekistan
Vietnam
Yemen
Zimbabwe

HEADQUARTERS AND PRODUCTION PLANTS

CHIORINO S.p.A.

Via S. Agata, 9
I-13900 Biella, Italy
Tel. +39 015 8489 1
Fax +39 015 849 61 61
chiorino@chiorino.com
www.chiorino.com

UNI EN ISO 9001:2015
UNI EN ISO 14001:2015
OHSAS 18001:2007
EMAS

